

Introduction

The term ukiyo-style is the name given to a style of art that was popular with Japanese townsmen in the 18th and 19th centuries. During this period art was an important source of visual entertainment and a primary objective of ukiyo-style art was to be especially entertaining. Many of the purchasers of ukiyo-style art lived for the moment, continuously seeking to be entertained. The impermanence of life was their justification for this lifestyle and the word ukiyo, meaning floating world or impermanence, is the name now used to describe forms of entertainment enjoyed by practitioners of this lifestyle.

To make pictures entertaining ukiyo-style artists drew their subjects in an idealistic rather than realistic way. For bird subjects, artists exaggerated prominent features using a bold, black outline. Any additional colors were each applied evenly within this outline which made the bird stand out from the background but also made the bird look two-dimensional (versus three-dimensional achieved by applying color unevenly). The colors used were not entirely true-to-life for two reasons. First, true-to-life dull colors were less entertaining than brighter colors. Second, *printed* ukiyo-style pictures were intended to be a relatively inexpensive source of entertainment and using multiple colors to replicate a bird's complicated color scheme would have increased the price, making the print less attractive to print purchasers.

This virtual exhibition provides fifty examples of ukiyo-style bird prints selected from the Reader Collection of Japanese Art. To provide representation from the entire period of ukiyo-style bird printmaking (i.e., early 1700s to late 1800s) prints were chosen by fifty artists who were active during different parts of this period. The fifty prints are arranged chronologically below. Twenty-seven of these prints were sold individually and the other twenty-three were included in picture books. The title and publication date of these picture books are given, where appropriate, along with the name of the artist and the bird depicted in each of the fifty prints.

Additional Reading

Bell, David. 2004. *Ukiyo-e Explained*. Global Oriental, Folkestone, UK.

Hockley, Allen. 2003. *The Prints of Isoda Koryūsai, Floating World Culture and Its Consumers in Eighteenth-century Japan*. University of Washington Press, Seattle.

1 Hawk (*Accipiter* sp.) by **Kiyomasu Torii**, early 1700s, 305 x 540 mm



2 Mandarin duck (*Aix galericulata*) by **Shigenaga Nishimura**, early 1700s, 155 x 310 mm



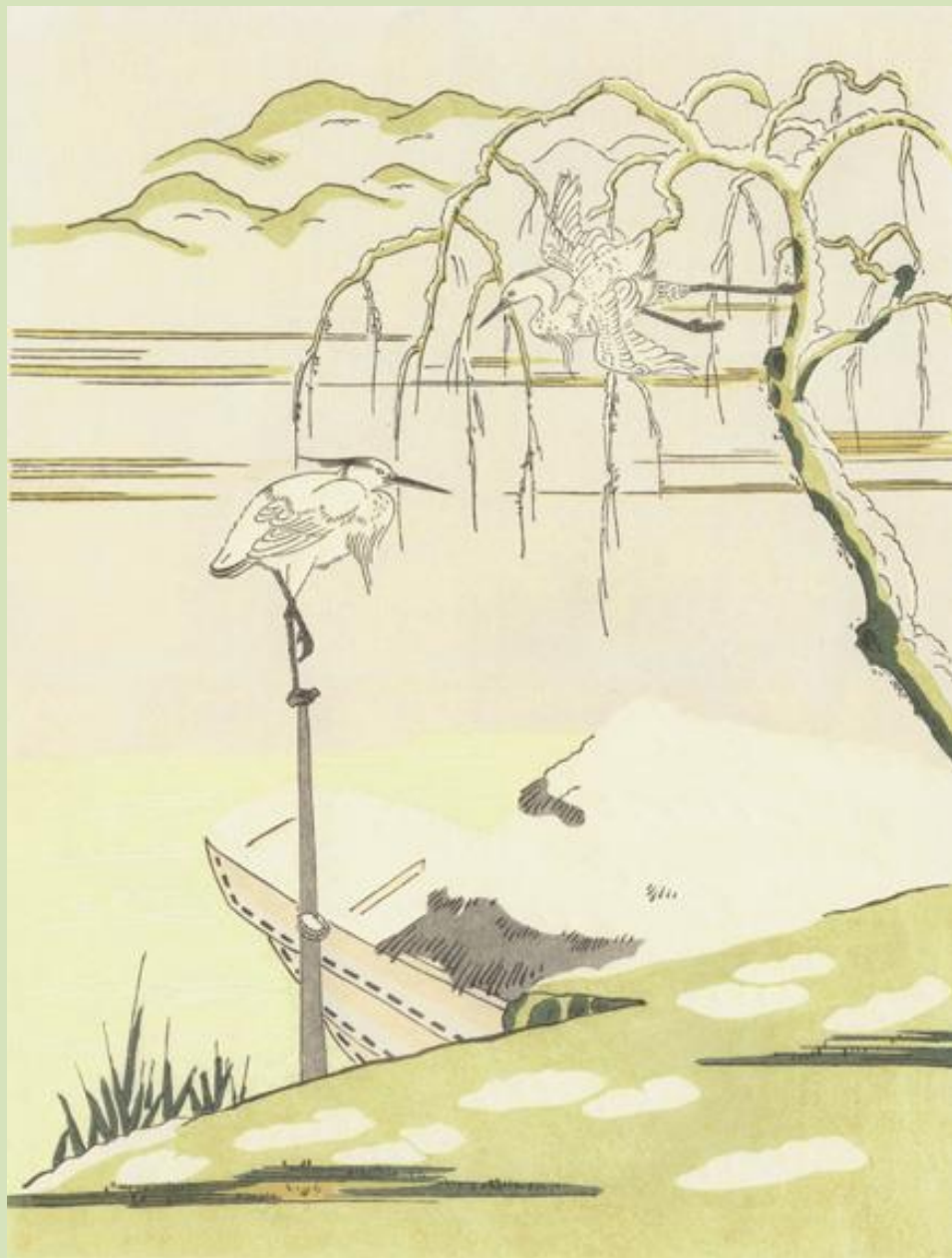
3 Eurasian tree sparrow (*Passer montanus*) by **Masanobu Okumura**, early 1700s, 160 x 325 mm



4 Scops owl (*Otus* sp.) and Eurasian tree sparrow (*Passer montanus*) by **Toshinobu Okumura**, early 1700s, 170 x 340 mm



5 Little egret (*Egretta garzetta*) by Harunobu Suzuki, late 1700s, 215 x 280 mm



6 Long-tailed tit (*Aegithalos caudatus*) by Koryūsei Isoda, late 1700s, 160 x 230 mm



7 Blue magpie (*Urocissa erythrorhyncha*) by **Shūchō Tamagawa**, late 1700s, 75 x 350 mm



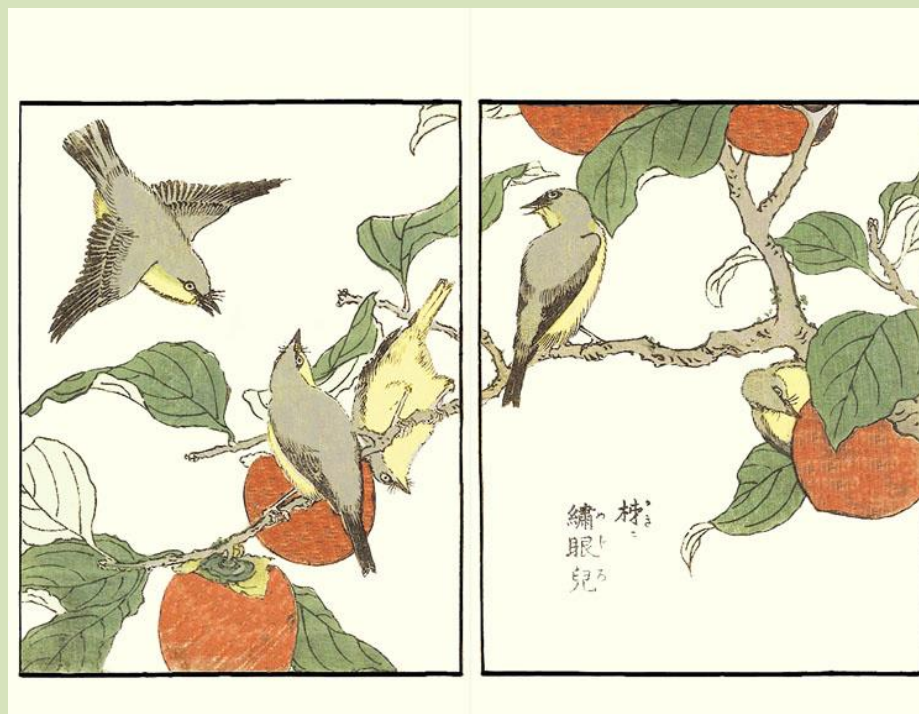
8 White-fronted goose (*Anser albifrons*) by **Hyakki San'emon**, late 1700s, 205 x 280 mm



13 Eurasian tree sparrow
(*Passer motanus*) by **Ichiga Oki**, early 1800s, 245 x 175 mm



14 Japanese white-eye
(*Zosterops japonicus*) by **Shigemasa Kitao**, included in
Shashin Kachō Zue
(Naturalistic Pictures of
Flowers and Birds), 1805-27,
310 x 220 mm



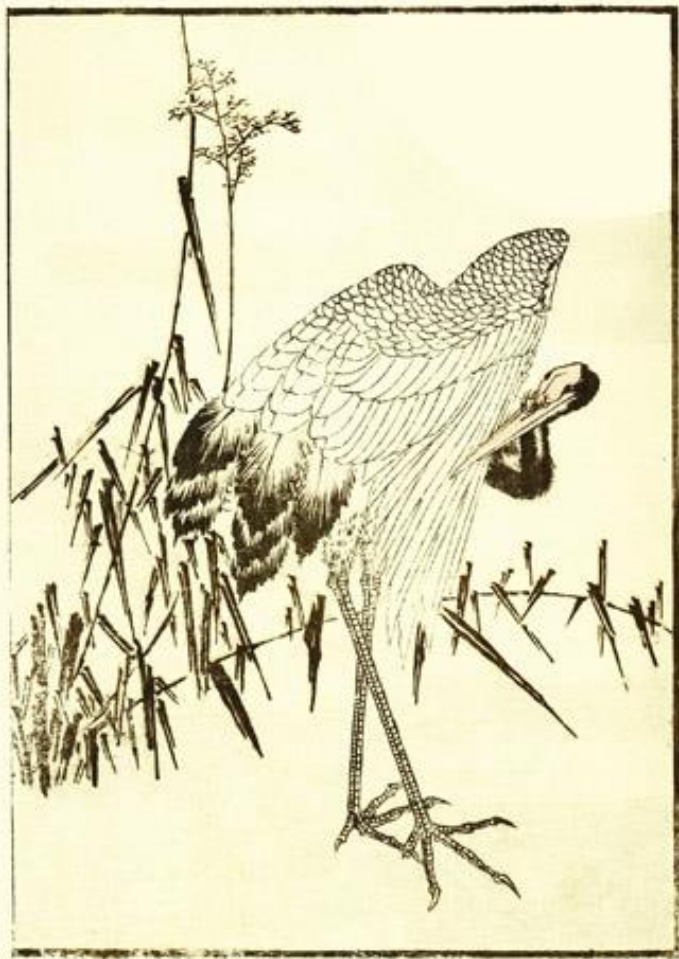
15 Green pheasant (*Phasianus versicolor*) by **Hidemaro Kitagawa**, early 1800s, 180 x 210 mm



16 Cockatoo (*Cacatua* sp.) by **Toyohiro Utagawa**, early 1800s, 165 x 220 mm



17 Red-crowned crane (*Grus japonensis*) by **Hokuun Katsushika**, included in Hokuun Manga (Sketches by Hokuun), 1824, 155 x 225 mm



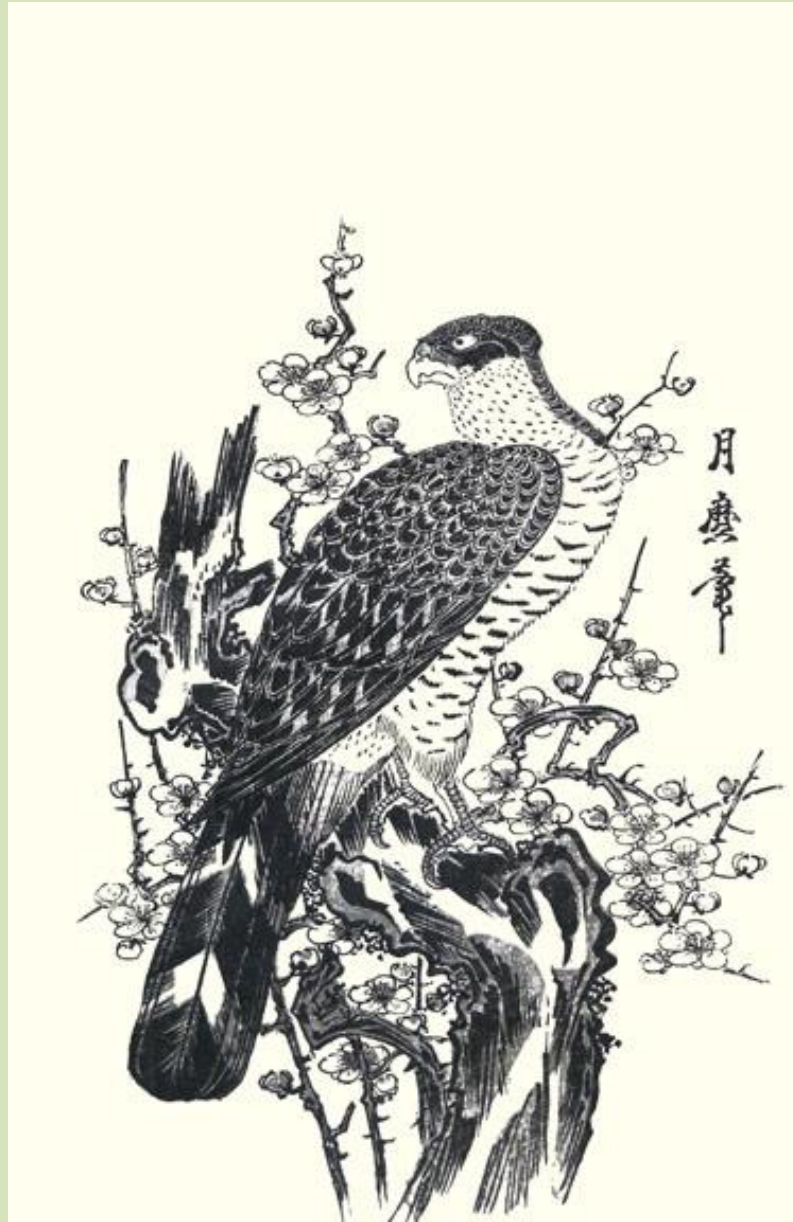
18 Top – Common kingfisher (*Alcedo atthis*); Bottom – Japanese quail (*Coturnix japonica*) by **Toyokuni Utagawa**, included in Toshidama Fude (New Year's Brush), 1830, 160 x 225 mm



19 Hawk (*Accipiter* sp.) by **Eizan Kikugawa**, early 1800s, 245 x 730 mm



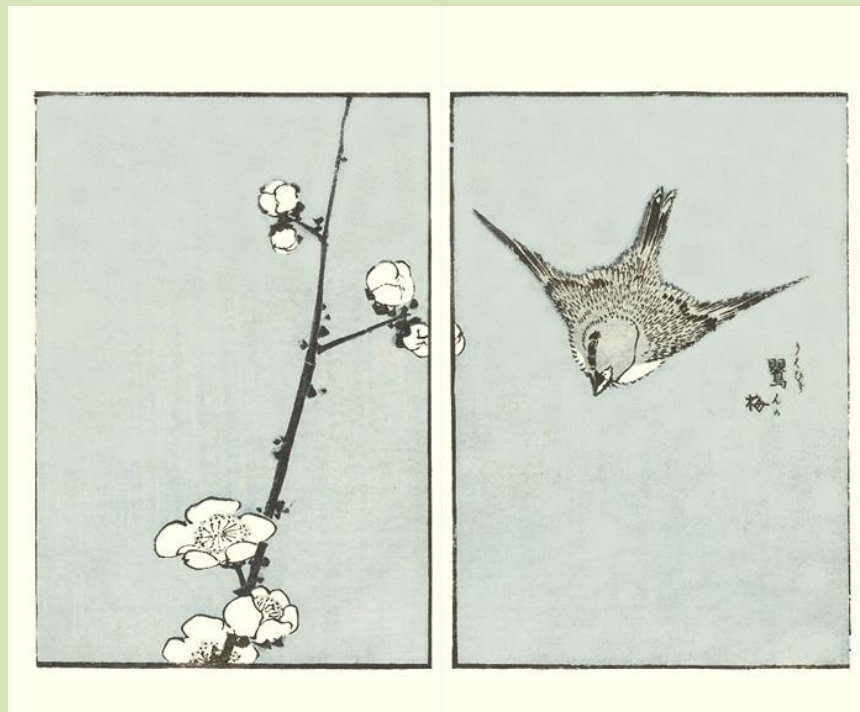
20 Hawk (*Accipiter* sp.) by **Tsukimaro Kitagawa**, early 1800s, 235 x 355 mm



21 White-fronted goose
(*Anser albifrons*) by **Eisen
Ikeda**, early 1800s, 260 x 190
mm



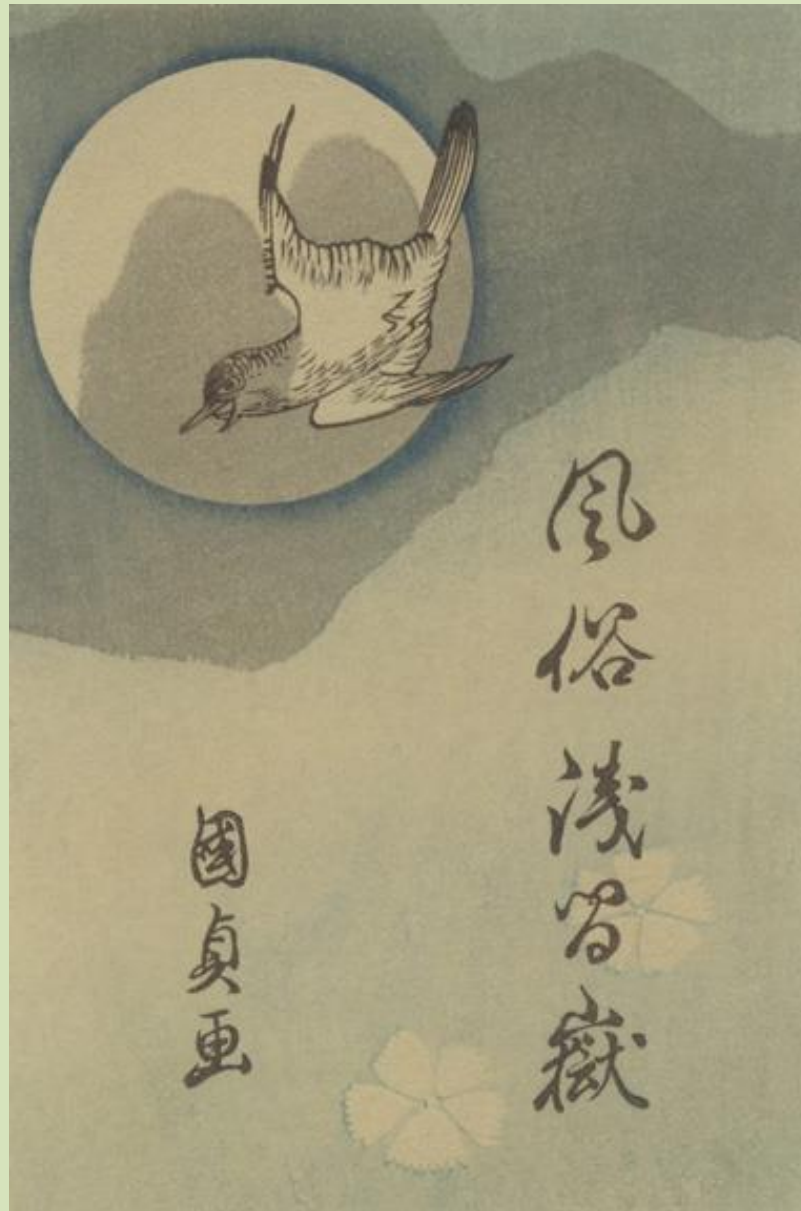
22 Japanese bush-warbler
(*Cettia diphone*) by **Koji
Shōsō**, included in *Kachō
Gafu* (Picture Album of
Flowers and Birds), 1832,
310 x 230 mm



23 Peregrine falcon (*Falco peregrinus*)
by Hiroshige Utagawa, early 1800s, 175
x 380 mm



24 Lesser cuckoo (*Cuculus poliocephalus*) by Kunisada Utagawa, early
1800s, 105 x 155 mm



25 Japanese grosbeak (*Eophona personata*) by **Hokusai Katsushika**, mid-1800s, 225 x 340 mm



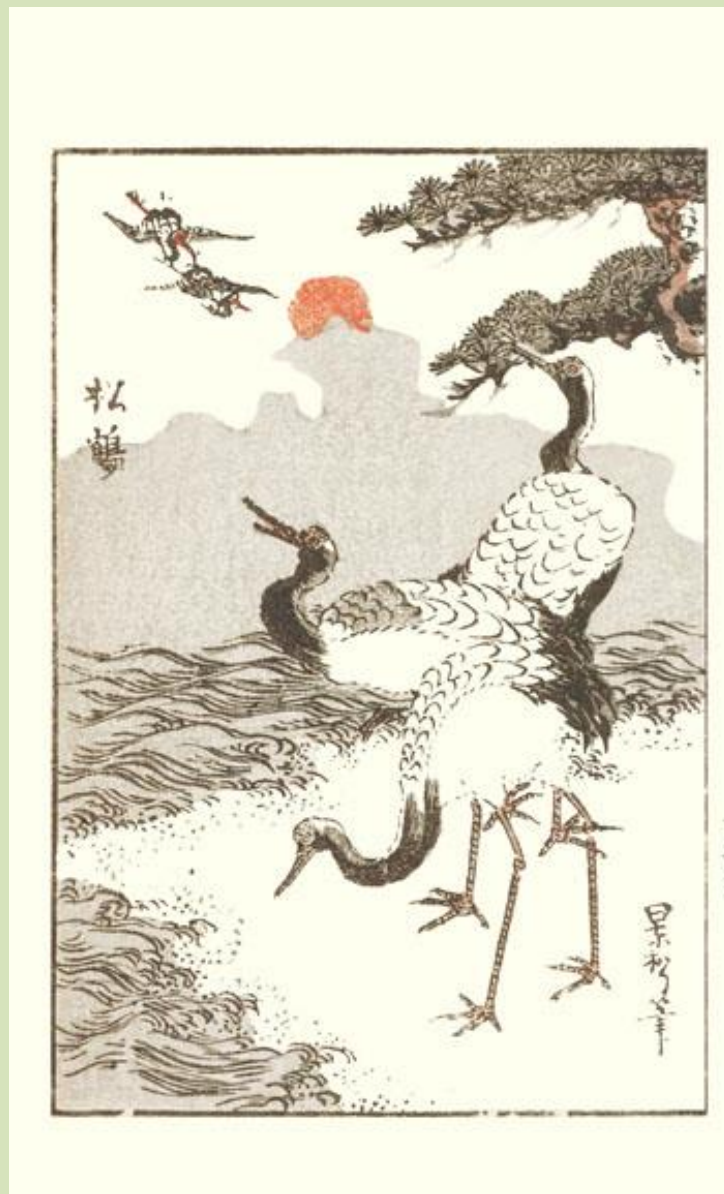
26 Red-crowned crane (*Grus japonensis*) by **Taito II Katsushika**, included in *Kachō Gaden* (Drawing Methods for Flowers and Birds), 1848-9, 150 x 220 mm



27 Red-crowned crane (*Grus japonensis*) by **Yoshikazu Utagawa**, mid-1800s, 85 x 245 mm



28 Red-crowned crane (*Grus japonensis*) by **Kagematsu Utagawa**, included in *Dokushū Mōhitsu Etehon* (Practice Book of Brush Painting for Self Learning), mid-1800s, 125 x 175 mm



29 Java sparrow (*Padda oryzivora*), domestic fowl (*Gallus gallus*) and Eurasian tree sparrow (*Passer montanus*) by **Hokuju Katsushika**, included in *Kachō Sansui Hokuju Gafu* (Flower Bird Landscape Picture Album by Hokuju), 1852, 120 x 180 mm



30 Japanese bush-warbler (*Cettia diphone*) by **Shigenobu Yanagawa**, included in *Yanagawa Gafu Kachō Bu* (Picture Album by Yanagawa Flower and Bird Part), 1856, 125 x 180 mm



31 Dollarbird (*Eurystomus orientalis*) by **Sūgakudō Nakayama**, included in *Shō Utsushi Shijū-hachi Taka* (Exact Likeness of Forty-eight Hawks), 1859, 245 x 365 mm



32 Red-crowned crane (*Grus japonensis*) by **Hiroshige III Utagawa**, included in *Kachō Zufu* (Picture Album of Flowers and Birds), mid-1800s, 125 x 180 mm



33 Barn swallow (*Hirundo rustica*) by **Kunisada II Utagawa**, mid-1800s, 290 x 225 mm



34 Light-vented bulbul (*Pycnonotus sinensis*) by **Yoshitsuna Utagawa**, included in *Ehon Kachō Soroi* (Complete Picture Book of Flowers and Birds), mid-1800s, 240 x 180 mm



35 Yellow-breasted magpie (*Cissa hypoleuca*) by **Sadahide Utagawa**, mid-1800s, 310 x 200 mm



36 Eurasian jay (*Garrulus glandarius*) by **Yoshitora Utagawa**, mid-1800s, 205 x 145 mm



37 Mandarin duck (*Aix galericulata*) by **Sadanobu II Hasegawa**, late 1800s, 290 x 230 mm



38 Red avadavat (*Amandava amandava*) by **Yoshiharu Utagawa**, included in *Shinsen Kachō Zue* (Collection of Newly Selected Pictures of Flowers and Birds), 1878, 115 x 180 mm



39 Little egret (*Egretta garzetta*) by **Kiyoshi Takizawa**, included in *Senryūdō Gafu* (Picture Album by Senryūdō), 1879, 155 x 225 mm



40 Skylark (*Alauda arvensis*) by **Ōsui Asai**, included in *Kachō Gafu* (Picture Album of Flowers and Birds), 1879, 150 x 225 mm



41 Japanese quail (*Coturnix japonica*) by Gyōsan, late 1800s, 255 x 375 mm



42 Blue magpie (*Urocissa erythrorhyncha*) and tit (*Parus* sp.) by Kyōsai Kawanabe, included in Kyōsai Gafu (Picture Album by Kyōsai), 1880, 190 x 165 mm



43 Eurasian tree sparrow (*Passer montanus*) and black bulbul (*Hypsipetes leucocephalus*) by **Takematsu Takahashi**, included in *Sōmoku Kachō Zue* (Collection of Pictures of Plants, Flowers and Birds), 1881, 240 x 180 mm



44 Eurasian tree sparrow (*Passer montanus*) by **Rinsai Shiba**, included in *Shinsen Sanjūroku Kachō* (Newly Selected Thirty-six Flowers and Birds), late 1800s, 360 x 240 mm



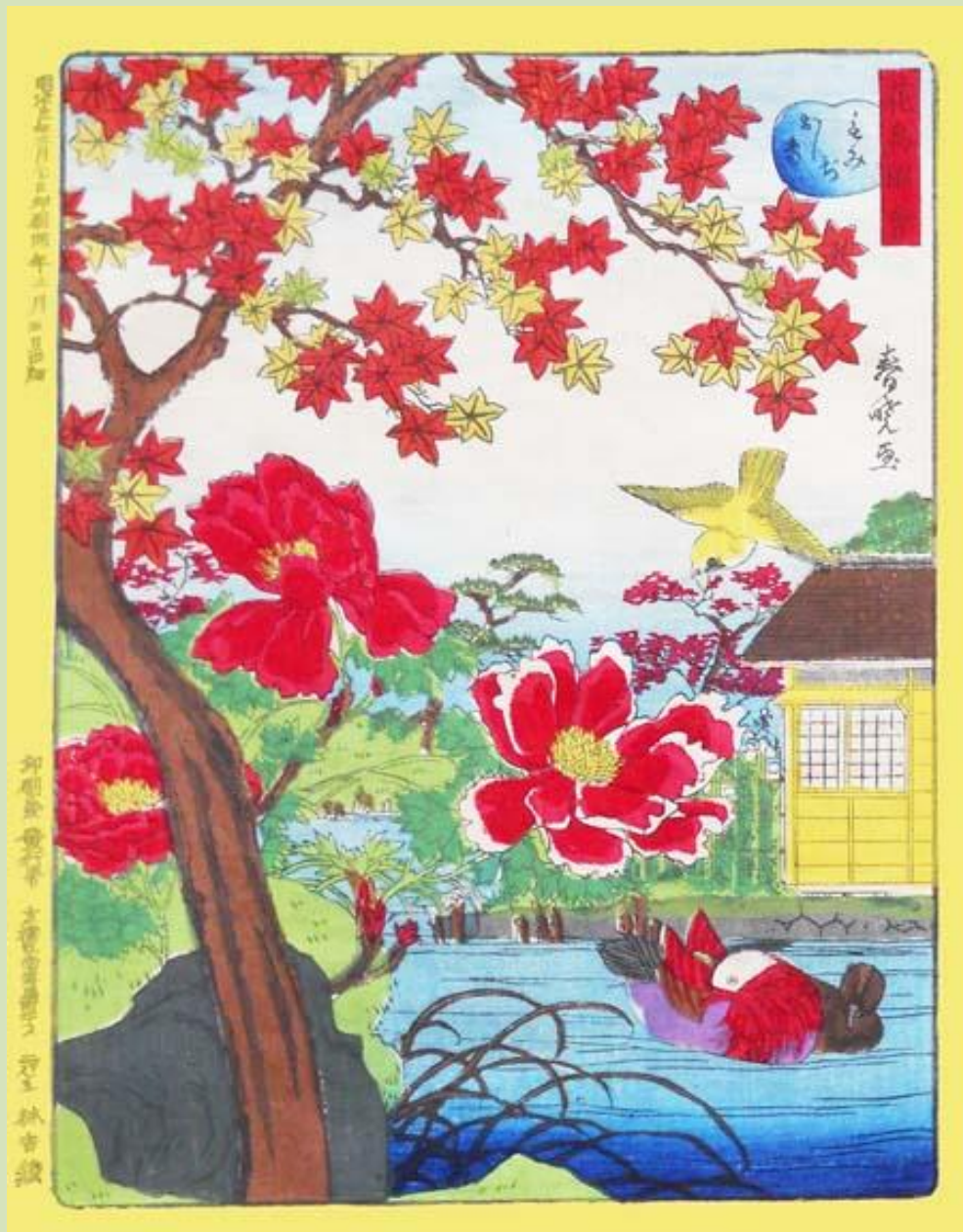
45 Black-naped oriole (*Oriolus chinensis*) by **Seisai Itō**, included in *Shunjū Nishiki-E* (Brocade Pictures of Spring and Fall), 1881, 170 x 245 mm



46 Domestic fowl (*Gallus gallus*) by **Toshimitsu Kobayashi**, 1883, 225 x 350 mm



47 Mandarin duck (*Aix galericulata*) and canary (*Serinus canaria*) by **Shungyō Nagashima**, 1888, 185 x 240 mm



48 Brown-eared bulbul (*Ixos amaurotis*) by **Itsujirō Miwa**, included in *Shoshoku Hikkei Kachō Gafu* (Picture Album of Flowers and Birds, a Manual for Artisans), 1890, 120 x 175 mm



49 Light-vented bulbul (*Pycnonotus sinensis*) by **Satarō Nagao**, included in *Kachō Sōmoku Saishiki Gafu* (Picture Album of Flowers, Birds, Herbs and Trees), 1891, 120 x 180 mm



50 Golden eagle (*Aquila chrysaetos*) and Eurasian tree sparrow (*Passer montanus*) by **Gorō Imae**, included in *Kachō Gashiki* (Painting Style for Flowers and Birds), 1892, 120 x 180 mm

